

THE OPTIMAL MONETARY POLICY RESPONSE TO TARIFFS

Javier Bianchi¹ Louphou Coulibaly²

¹Federal Reserve Bank of Minneapolis

²University of Wisconsin-Madison and NBER

Motivation

- **How should a central bank respond to import tariffs?**
 - ▶ Tighten monetary policy to contain inflationary pressures, or...
 - ▶ Neutral monetary stance (“look-through”) and allow one-time jump in the CPI?

Jay Powell pushes back on calls for Federal Reserve rate cuts as soon as July

US central bank chair tells congressional committee economy remains 'solid' but tariffs could push up prices



Jay Powell has been under fire from the US president over the Federal Open Market Committee's decision to keep interest rates on hold © Mark Schiefelbein/AP

Top Federal Reserve official calls for rate cuts as soon as July

Governor Chris Waller says US has yet to see an inflation 'shock' from Donald Trump's tariffs



Christopher Waller joined the Fed's policy-setting panel in 2020 after being nominated by Donald Trump during his first term as president © Bloomberg

Motivation

- **How should a central bank respond to import tariffs?**
 - ▶ Tighten monetary policy to contain inflationary pressures, or...
 - ▶ Neutral monetary stance (“look-through”) and allow one-time jump in the CPI?

This paper:

- ▶ Optimal monetary policy response to tariffs is **expansionary**


Overview

- Open-economy New Keynesian model with home and imported goods
 - ▶ Macroeconomic effects depend on monetary policy


Overview

- PPI targeting: tariffs generally contractionary—always fall for small tariffs


Overview

- PPI targeting: tariffs generally contractionary—always fall for small tariffs
- flex-price allocation (“look-through”)
- 


Overview

- PPI targeting: tariffs generally contractionary—always fall for small tariffs
- Optimal policy: **overheating**  positive PPI inflation & positive output gap

Overview


- PPI targeting: tariffs generally contractionary—always fall for small tariffs
- Optimal policy: **overheating**  positive PPI inflation & positive output gap
 - ▶ Wedge between internal and international price
 - ▶ Fiscal externality \Rightarrow Depress inefficiently imports

Overview

- PPI targeting: tariffs generally contractionary—always fall for small tariffs
 - Optimal policy: **overheating**  positive PPI inflation & positive output gap
 - ▶ Wedge between internal and international price
 - ▶ Fiscal externality \Rightarrow Depress inefficiently imports
- Tariffs can lead to an expansion or contraction in output

\neq textbook cost-push shock

Overview

- PPI targeting: tariffs generally contractionary—always fall for small tariffs
- Optimal policy: **overheating**  positive PPI inflation & positive output gap

- ▶ Wedge between internal and international price
- ▶ Fiscal externality \Rightarrow Depress inefficiently imports

Tariffs can lead to an expansion or contraction in output

Trade surplus, even with permanent tariff


 Monetary stimulus leads to temporary rise in output and savings

Overview

- PPI targeting: tariffs generally contractionary—always fall for small tariffs
 - Optimal policy: **overheating** → positive PPI inflation & positive output gap
 - ▶ Wedge between internal and international price
 - ▶ Fiscal externality ⇒ Depress inefficiently imports
- Tariffs can lead to an expansion or contraction in output
- Trade surplus, even with permanent tariff
- Exchange-rate depreciation, unlike conventional view

→ Weak dollar since April 2nd

Overview

- PPI targeting: tariffs generally contractionary—always fall for small tariffs
- Optimal policy: **overheating**  positive PPI inflation & positive output gap
 - ▶ Wedge between internal and international price
 - ▶ Fiscal externality \Rightarrow Depress inefficiently imports

Tariffs can lead to an expansion or contraction in output

Trade surplus, even with permanent tariff

Exchange-rate depreciation, unlike conventional view

- Extensions: temporary/anticipated, ex/endogenous TOT, supply chains

Literature on Tariffs in International Macro

- Classic question: Are tariffs expansionary or contractionary? Keynes vs. Mundell
- Recent studies: Auray, Devereux, Eyquem (2022,2024); Eichengreen (2019); Barattieri, Cacciatore and Ghironi (2021); Comin and Johnson (2021); Jeanne (2021); Jeanne-Son (2024); Bergin and Corsetti (2021); Erceg, Prestipino and Raffo (2023); Lloyd and Marin (2024)
- Bergin-Corsetti (2023): under cooperation, *contractionary* policy for tariff-imposing country

Our contribution:

- Optimal policy for tariff-imposing country:
 - ▶ *Expansionary* policy is optimal
 - ▶ Fiscal externality \Rightarrow tariff \neq TOT shock
- Characterize analytically when tariffs have expansionary vs. contractionary effects, through labor supply channel

Literature on Tariffs in International Macro

- Classic question: Are tariffs expansionary or contractionary? Keynes vs. Mundell
- Recent studies: Auray, Devereux, Eyquem (2022,2024); Eichengreen (2019); Barattieri, Cacciatore and Ghironi (2021); Comin and Johnson (2021); Jeanne (2021); Jeanne-Son (2024); Bergin and Corsetti (2021); Erceg, Prestipino and Raffo (2023); Lloyd and Marin (2024)
- Bergin-Corsetti (2023): under cooperation, *contractionary* policy for tariff-imposing country

Our contribution:

- Optimal policy for tariff-imposing country:
 - ▶ *Expansionary* policy is optimal
 - ▶ Fiscal externality \Rightarrow tariff \neq TOT shock
- Characterize analytically when tariffs have expansionary vs. contractionary effects, through labor supply channel

Active agenda!

Environment

- Deterministic SOE, infinite horizon, representative household
 - ▶ Two final consumption goods: home-produced (h) and foreign-produced (f)

Environment

- Deterministic SOE, infinite horizon, representative household
 - ▶ Two final consumption goods: home-produced (h) and foreign-produced (f)
- No market power in goods or capital markets:
 - ▶ Optimal tariff is zero
 - ▶ Monetary policy does not affect terms of trade

Environment

- Deterministic SOE, infinite horizon, representative household
 - ▶ Two final consumption goods: home-produced (h) and foreign-produced (f)
- No market power in goods or capital markets:
 - ▶ Optimal tariff is zero
 - ▶ Monetary policy does not affect terms of trade
- Monetary authority: sets monetary policy optimally, taking as given tariffs $\{\tau_t\}$

Households

$$\sum_{t=0}^{\infty} \beta^t [U(c_t^h, c_t^f) - v(\ell_t)]$$

$$U(c_t^h, c_t^f) = \frac{\sigma}{\sigma-1} \left[\omega (c_t^h)^{1-\frac{1}{\gamma}} + (1-\omega) (c_t^f)^{1-\frac{1}{\gamma}} \right]^{\frac{\gamma}{\gamma-1} \frac{\sigma-1}{\sigma}}, \quad v(\ell_t) = \omega \frac{\ell_t^{1+\psi}}{1+\psi}$$

- Budget constraint:

$$P_t^h c_t^h + P_t^f (1 + \tau_t) c_t^f + \frac{e_t b_{t+1}}{R^*} + \frac{B_{t+1}}{R_t} = e_t b_t + B_t + W_t \ell_t + T_t + D_t$$

Households

$$\sum_{t=0}^{\infty} \beta^t [U(c_t^h, c_t^f) - v(\ell_t)]$$

$$U(c_t^h, c_t^f) = \frac{\sigma}{\sigma-1} \left[\omega (c_t^h)^{1-\frac{1}{\gamma}} + (1-\omega) (c_t^f)^{1-\frac{1}{\gamma}} \right]^{\frac{\gamma}{\gamma-1} \frac{\sigma-1}{\sigma}}, \quad v(\ell_t) = \omega \frac{\ell_t^{1+\psi}}{1+\psi}$$

- Budget constraint:

$$P_t^h c_t^h + P_t^f (1 + \tau_t) c_t^f + \frac{e_t b_{t+1}}{R^*} + \frac{B_{t+1}}{R_t} = e_t b_t + B_t + W_t \ell_t + T_t + D_t$$

- Law of one price (before tariffs): $P_t^h = e_t P_t^{h*}$, $P_t^f = e_t P_t^{f*}$

Households

$$\sum_{t=0}^{\infty} \beta^t [U(c_t^h, c_t^f) - v(\ell_t)]$$

$$U(c_t^h, c_t^f) = \frac{\sigma}{\sigma-1} \left[\omega (c_t^h)^{1-\frac{1}{\gamma}} + (1-\omega) (c_t^f)^{1-\frac{1}{\gamma}} \right]^{\frac{\gamma}{\gamma-1} \frac{\sigma-1}{\sigma}}, \quad v(\ell_t) = \omega \frac{\ell_t^{1+\psi}}{1+\psi}$$

- Budget constraint:

$$P_t^h c_t^h + P_t^f (1 + \tau_t) c_t^f + \frac{e_t b_{t+1}}{R^*} + \frac{B_{t+1}}{R_t} = e_t b_t + B_t + W_t \ell_t + T_t + D_t$$

- Law of one price (before tariffs): $P_t^h = e_t P_t^{h*}$, $P_t^f = e_t P_t^{f*}$

- Terms-of-trade exogenous $p \equiv \frac{P_t^{f*}}{P_t^{h*}} \leftarrow \text{Limit case w/ export elasticity} = \infty$

Firms

- Production of final goods uses domestic inputs (CES technology)
- Domestic inputs
 - ▶ Produced with labor $y_{jt} = \ell_{jt}$
 - ▶ Monopolistic competition + Rotemberg price adjustment costs
 - ▶ Steady-state subsidy to correct markup

Firms


- Production of final goods uses domestic inputs (CES technology)
- Domestic inputs
 - ▶ Produced with labor $y_{jt} = \ell_{jt}$
 - ▶ Monopolistic competition + Rotemberg price adjustment costs
 - ▶ Steady-state subsidy to correct markup

$$(1 + \pi_t)\pi_t = \frac{\varepsilon}{\varphi} \left[\frac{W_t}{P_t^h} - 1 \right] + \beta \frac{u_h(c_{t+1}^h, c_{t+1}^f)}{u_h(c_t^h, c_t^f)} \frac{\ell_{t+1}}{\ell_t} (1 + \pi_{t+1})\pi_{t+1}$$

where $\pi_t \equiv P_t^h / P_{t-1}^h - 1$ is Producer Price Index (PPI) inflation


Competitive Equilibrium

- Optimization (households and firms) + govt. budget + labor market clearing.


$$\tau_t P_t^f c_t^f = T_t + s P_t^h y_t$$

Competitive Equilibrium

- Optimization (households and firms) + govt. budget + labor market clearing.

$$\tau_t P_t^f c_t^f = T_t + s P_t^h y_t$$



- Balance of payments:

$$\underbrace{\left(1 - \gamma \frac{\varphi}{2} \pi_t^2\right) \ell_t - c_t^h}_{\text{exports}} - \underbrace{p c_t^f}_{\text{imports}} = \underbrace{\frac{b_{t+1}}{R^*} - b_t}_{\text{capital outflows}}$$

→ Fraction of price adjustment costs that are a deadweight loss ($1 - \gamma$ rebated)

Competitive Equilibrium

- Optimization (households and firms) + govt. budget + labor market clearing.

$$\tau_t P_t^f c_t^f = T_t + s P_t^h y_t$$


- Balance of payments:

$$\underbrace{\left(1 - \Upsilon \frac{\varphi}{2} \pi_t^2\right) \ell_t - c_t^h}_{\text{exports}} - \underbrace{p c_t^f}_{\text{imports}} = \underbrace{\frac{b_{t+1}}{R^*} - b_t}_{\text{capital outflows}}$$

→ Fraction of price adjustment costs that are a deadweight loss ($1 - \Upsilon$ rebated)

- Portfolio undetermined, assume $B_0 = 0$ \Leftarrow Abstract from valuation effects

Efficient Allocation

$$\begin{aligned} \max_{\{b_{t+1}, c_t^f, c_t^h, \ell_t\}} & \sum_{t=0}^{\infty} \beta^t [u(c_t^h, c_t^f) - v(\ell_t)], \\ \text{s.t.} & c_t^h + pc_t^f + \frac{b_{t+1}}{R^*} = b_t + \ell_t. \end{aligned}$$

EFFICIENT ALLOCATION


$$\frac{v'(\ell_t)}{u_h(c_t^h, c_t^f)} = 1$$

$$\frac{u_f(c_t^h, c_t^f)}{u_h(c_t^h, c_t^f)} = p$$

$$u_h(c_t^h, c_t^f) = \beta R^* u_h(c_{t+1}^h, c_{t+1}^f)$$

$$\ell_t - c_t^h - pc_t^f = \frac{b_{t+1}}{R^*} - b_t$$

COMPETITIVE EQUILIBRIUM

$$(1+\pi_t)\pi_t = \frac{\varepsilon}{\varphi} \left[\frac{v'(\ell_t)}{u_h(c_t^h, c_t^f)} - 1 \right] + \frac{1}{R^*} \frac{\ell_{t+1}}{\ell_t} (1+\pi_{t+1})\pi_{t+1}$$


$$\frac{u_f(c_t^h, c_t^f)}{u_h(c_t^h, c_t^f)} = p(1 + \tau_t)$$

$$u_h(c_t^h, c_t^f) = \beta R^* u_h(c_{t+1}^h, c_{t+1}^f)$$

$$(1 - \gamma \frac{\varphi}{2} \pi_t^2) \ell_t - c_t^h - p c_t^f = \frac{b_{t+1}}{R^*} - b_t$$

EFFICIENT ALLOCATION

$$\frac{v'(\ell_t)}{u_h(c_t^h, c_t^f)} = 1$$

$$\frac{u_f(c_t^h, c_t^f)}{u_h(c_t^h, c_t^f)} = p$$

$$u_h(c_t^h, c_t^f) = \beta R^* u_h(c_{t+1}^h, c_{t+1}^f)$$

$$\ell_t - c_t^h - p c_t^f = \frac{b_{t+1}}{R^*} - b_t$$

COMPETITIVE EQUILIBRIUM

$$(1+\pi_t)\pi_t = \frac{\varepsilon}{\varphi} \left[\frac{v'(\ell_t)}{u_h(c_t^h, c_t^f)} - 1 \right] + \frac{1}{R^*} \frac{\ell_{t+1}}{\ell_t} (1+\pi_{t+1})\pi_{t+1}$$

$$\frac{u_f(c_t^h, c_t^f)}{u_h(c_t^h, c_t^f)} = p(1 + \tau_t)$$

$$u_h(c_t^h, c_t^f) = \beta R^* u_h(c_{t+1}^h, c_{t+1}^f)$$

$$(1 - \gamma \frac{\varphi}{2} \pi_t^2) \ell_t - c_t^h - p c_t^f = \frac{b_{t+1}}{R^*} - b_t$$

EFFICIENT ALLOCATION

$$\frac{v'(\ell_t)}{u_h(c_t^h, c_t^f)} = 1$$

$$\frac{u_f(c_t^h, c_t^f)}{u_h(c_t^h, c_t^f)} = p$$

$$u_h(c_t^h, c_t^f) = \beta R^* u_h(c_{t+1}^h, c_{t+1}^f)$$

$$\ell_t - c_t^h - p c_t^f = \frac{b_{t+1}}{R^*} - b_t$$

COMPETITIVE EQUILIBRIUM

$$(1+\pi_t)\pi_t = \frac{\varepsilon}{\varphi} \left[\frac{v'(\ell_t)}{u_h(c_t^h, c_t^f)} - 1 \right] + \frac{1}{R^*} \frac{\ell_{t+1}}{\ell_t} (1+\pi_{t+1})\pi_{t+1}$$

$$\frac{u_f(c_t^h, c_t^f)}{u_h(c_t^h, c_t^f)} = p(1 + \tau_t)$$

$$u_h(c_t^h, c_t^f) = \beta R^* u_h(c_{t+1}^h, c_{t+1}^f)$$

$$(1 - \gamma \frac{\varphi}{2} \pi_t^2) \ell_t - c_t^h - p c_t^f = \frac{b_{t+1}}{R^*} - b_t$$

EFFICIENT ALLOCATION

$$\frac{v'(\ell_t)}{u_h(c_t^h, c_t^f)} = 1$$

$$\frac{u_f(c_t^h, c_t^f)}{u_h(c_t^h, c_t^f)} = p$$

$$u_h(c_t^h, c_t^f) = \beta R^* u_h(c_{t+1}^h, c_{t+1}^f)$$

$$\ell_t - c_t^h - p c_t^f = \frac{b_{t+1}}{R^*} - b_t$$

- **Tariffs:** distort MRS = p constraint
- **Sticky prices:** labor wedge & inflation costs

} Two distortions

COMPETITIVE EQUILIBRIUM $\tau = 0$

$$(1 + \pi_t) \pi_t = \frac{\varepsilon}{\varphi} \left[\frac{v'(\ell_t)}{u_h(c_t^h, c_t^f)} - 1 \right] + \frac{1}{R^*} \frac{\ell_{t+1}}{\ell_t} (1 + \pi_{t+1}) \pi_{t+1}$$

$$\frac{u_f(c_t^h, c_t^f)}{u_h(c_t^h, c_t^f)} = p$$

$$u_h(c_t^h, c_t^f) = \beta R^* u_h(c_{t+1}^h, c_{t+1}^f)$$

$$(1 - \gamma \frac{\varphi}{2} \pi_t^2) \ell_t - c_t^h - p c_t^f = \frac{b_{t+1}}{R^*} - b_t$$

EFFICIENT ALLOCATION

$$\frac{v'(\ell_t)}{u_h(c_t^h, c_t^f)} = 1$$

$$\frac{u_f(c_t^h, c_t^f)}{u_h(c_t^h, c_t^f)} = p$$

$$u_h(c_t^h, c_t^f) = \beta R^* u_h(c_{t+1}^h, c_{t+1}^f)$$

$$\ell_t - c_t^h - p c_t^f = \frac{b_{t+1}}{R^*} - b_t$$

COMPETITIVE EQUILIBRIUM $\tau = 0$ (with $\pi_t = 0$)

EFFICIENT ALLOCATION

$$0 = \frac{\varepsilon}{\varphi} \left[\frac{v'(\ell_t)}{u_h(c_t^h, c_t^f)} - 1 \right]$$

$$\frac{u_f(c_t^h, c_t^f)}{u_h(c_t^h, c_t^f)} = p$$

$$u_h(c_t^h, c_t^f) = \beta R^* u_h(c_{t+1}^h, c_{t+1}^f)$$

$$\ell_t - c_t^h - pc_t^f = \frac{b_{t+1}}{R^*} - b_t$$

$$\frac{v'(\ell_t)}{u_h(c_t^h, c_t^f)} = 1$$

$$\frac{u_f(c_t^h, c_t^f)}{u_h(c_t^h, c_t^f)} = p$$

$$u_h(c_t^h, c_t^f) = \beta R^* u_h(c_{t+1}^h, c_{t+1}^f)$$

$$\ell_t - c_t^h - pc_t^f = \frac{b_{t+1}}{R^*} - b_t$$

COMPETITIVE EQUILIBRIUM

$$(1+\pi_t)\pi_t = \frac{\varepsilon}{\varphi} \left[\frac{v'(\ell_t)}{u_h(c_t^h, c_t^f)} - 1 \right] + \frac{1}{R^*} \frac{\ell_{t+1}}{\ell_t} (1+\pi_{t+1})\pi_{t+1}$$

$$\frac{u_f(c_t^h, c_t^f)}{u_h(c_t^h, c_t^f)} = p(1 + \tau_t)$$

$$u_h(c_t^h, c_t^f) = \beta R^* u_h(c_{t+1}^h, c_{t+1}^f)$$

$$(1 - \gamma \frac{\varphi}{2} \pi_t^2) \ell_t - c_t^h - p c_t^f = \frac{b_{t+1}}{R^*} - b_t$$

EFFICIENT ALLOCATION

$$\frac{v'(\ell_t)}{u_h(c_t^h, c_t^f)} = 1$$

$$\frac{u_f(c_t^h, c_t^f)}{u_h(c_t^h, c_t^f)} = p$$

$$u_h(c_t^h, c_t^f) = \beta R^* u_h(c_{t+1}^h, c_{t+1}^f)$$

$$\ell_t - c_t^h - p c_t^f = \frac{b_{t+1}}{R^*} - b_t$$

COMPETITIVE EQUILIBRIUM

$$(1+\pi_t) \pi_t \leftarrow \frac{\varepsilon}{\varphi} \left[\frac{v'(\ell_t)}{u_h(c_t^h, c_t^f)} - 1 \right] + \frac{1}{R^*} \frac{\ell_{t+1}}{\ell_t} (1+\pi_{t+1}) \pi_{t+1}$$

$$\frac{u_f(c_t^h, c_t^f)}{u_h(c_t^h, c_t^f)} = p(1 + \tau_t)$$

$$u_h(c_t^h, c_t^f) = \beta R^* u_h(c_{t+1}^h, c_{t+1}^f)$$

$$(1 - \gamma \frac{\varphi}{2} \pi_t^2) \ell_t - c_t^h - p c_t^f = \frac{b_{t+1}}{R^*} - b_t$$

EFFICIENT ALLOCATION

$$\frac{v'(\ell_t)}{u_h(c_t^h, c_t^f)} = 1$$

$$\frac{u_f(c_t^h, c_t^f)}{u_h(c_t^h, c_t^f)} = p$$

$$u_h(c_t^h, c_t^f) = \beta R^* u_h(c_{t+1}^h, c_{t+1}^f)$$

$$\ell_t - c_t^h - p c_t^f = \frac{b_{t+1}}{R^*} - b_t$$

Employment under Look-Through Policy

Definition: A policy of “look-through” targets PPI inflation, $\pi_t = 0$ for all t

- Closes labor wedge and replicates flex-price allocation

→ Absent tariffs, this is optimal \Leftarrow Divine coincidence

Employment under Look-Through Policy

Definition: A policy of “look-through” targets PPI inflation, $\pi_t = 0$ for all t

- Closes labor wedge and replicates flex-price allocation

→ Absent tariffs, this is optimal \Leftarrow Divine coincidence

Proposition. Assume that $\beta R^* = 1, \tau_t = \tau, b_0 = 0$. Then, employment is given by

$$\ell_t(\tau) = \left[\frac{\Theta_\tau + \tau}{1 + \tau} (\omega \Theta_\tau)^{\frac{\sigma - \gamma}{\gamma - 1}} \right]^{\frac{1}{1 + \sigma \psi}}, \quad \text{where } \Theta_\tau \equiv 1 + \left(\frac{1 - \omega}{\omega} \right)^\gamma [p(1 + \tau)]^{1 - \gamma} > 1$$

Employment under Look-Through Policy

Definition: A policy of “look-through” targets PPI inflation, $\pi_t = 0$ for all t

- Closes labor wedge and replicates flex-price allocation

→ Absent tariffs, this is optimal \Leftarrow Divine coincidence

Proposition. Assume that $\beta R^* = 1, \tau_t = \tau, b_0 = 0$. Then, employment is given by

$$\ell_t(\tau) = \left[\frac{\Theta_\tau + \tau}{1 + \tau} (\omega \Theta_\tau)^{\frac{\sigma - \gamma}{\gamma - 1}} \right]^{\frac{1}{1 + \sigma \psi}}, \quad \text{where } \Theta_\tau \equiv 1 + \left(\frac{1 - \omega}{\omega} \right)^\gamma [p(1 + \tau)]^{1 - \gamma} > 1$$

and

$$c_t^h(\tau) = \frac{1 + \tau}{\Theta_\tau + \tau} \ell_t(\tau), \quad c_t^f(\tau) = \frac{\Theta_\tau - 1}{p(\Theta_\tau + \tau)} \ell_t(\tau)$$

Are Tariffs Expansionary or Contractionary?

- Under look-through policy

$$\frac{d \log \ell(\tau)}{d\tau} = - \overbrace{\frac{(\Theta_\tau - 1)}{(1 + \sigma\psi)(1 + \tau)(\Theta_\tau + \tau)\Theta_\tau}}^{>0} [\sigma\Theta_\tau + (\sigma - \gamma)\tau]$$

Are Tariffs Expansionary or Contractionary?

- Under look-through policy

$$\frac{d \log \ell(\tau)}{d\tau} = - \frac{\overbrace{(\Theta_\tau - 1)}^{>0}}{(1 + \sigma\psi)(1 + \tau)(\Theta_\tau + \tau)\Theta_\tau} [\sigma\Theta_\tau] < 0$$

- ▶ For small τ , increase in tariffs are always contractionary—even in the absence of TOT or exchange rate movements (cf. Mundell, 1961)

Are Tariffs Expansionary or Contractionary?

- Under look-through policy

$$\frac{d \log \ell(\tau)}{d\tau} = - \overbrace{\frac{(\Theta_\tau - 1)}{(1 + \sigma\psi)(1 + \tau)(\Theta_\tau + \tau)\Theta_\tau}}^{>0} [\sigma\Theta_\tau + (\sigma - \gamma)\tau]$$

- ▶ For small τ , increase in tariffs are always contractionary—even in the absence of TOT or exchange rate movements (cf. Mundell, 1961)
- ▶ For large τ : contractionary if goods are Hicksian complements ($\sigma < \gamma$)
 - but may be expansionary if goods are Hicksian substitutes ($\sigma > \gamma$)

Ramsey Optimal Monetary Policy

$$\max_{\pi_t, b_{t+1}, \ell_t, c_t^f, c_t^h} \sum_{t=0}^{\infty} \beta^t \left[u(c_t^h, c_t^f) - v(\ell_t) \right],$$

$$\text{s.t.} \quad c_t^h + p c_t^f + \frac{b_{t+1}}{R^*} = b_t + \ell_t \left(1 - \Upsilon \frac{\varphi}{2} \pi_t^2 \right)$$

$$\frac{1 - \omega}{\omega} \left(\frac{c_t^h}{c_t^f} \right)^{\frac{1}{\gamma}} = p (1 + \tau_t)$$

$$u_h(c_t^h, c_t^f) = \beta R^* u_h(c_{t+1}^h, c_{t+1}^f)$$

$$(1 + \pi_t) \pi_t = \frac{\varepsilon}{\varphi} \left[\frac{v'(\ell_t)}{u_h(c_t^h, c_t^f)} - 1 \right] + \frac{\ell_{t+1}}{\ell_t} \frac{(1 + \pi_{t+1}) \pi_{t+1}}{R^*}$$

Ramsey Optimal Monetary Policy

$$\max_{\pi_t, b_{t+1}, \ell_t, c_t^f, c_t^h} \sum_{t=0}^{\infty} \beta^t \left[u(c_t^h, c_t^f) - v(\ell_t) \right], \quad \gamma = 0,$$

s.t. $c_t^h + p c_t^f + \frac{b_{t+1}}{R^*} = b_t + \ell_t$ ← Sticky prices induce costs only from output gap

$$\frac{1 - \omega}{\omega} \left(\frac{c_t^h}{c_t^f} \right)^{\frac{1}{\gamma}} = p (1 + \tau_t)$$

$$u_h(c_t^h, c_t^f) = \beta R^* u_h(c_{t+1}^h, c_{t+1}^f)$$

$$(1 + \pi_t) \pi_t = \frac{\varepsilon}{\varphi} \left[\frac{v'(\ell_t)}{u_h(c_t^h, c_t^f)} - 1 \right] + \frac{\ell_{t+1}}{\ell_t} \frac{(1 + \pi_{t+1}) \pi_{t+1}}{R^*}$$

Ramsey Optimal Monetary Policy

$$\max_{b_{t+1}, \ell_t, c_t^f, c_t^h} \sum_{t=0}^{\infty} \beta^t \left[u(c_t^h, c_t^f) - v(\ell_t) \right], \quad \gamma = 0,$$

$$\text{s.t.} \quad c_t^h + p c_t^f + \frac{b_{t+1}}{R^*} = b_t + \ell_t$$

$$\frac{1 - \omega}{\omega} \left(\frac{c_t^h}{c_t^f} \right)^{\frac{1}{\gamma}} = p (1 + \tau_t)$$

$$u_h(c_t^h, c_t^f) = \beta R^* u_h(c_{t+1}^h, c_{t+1}^f)$$

Ramsey Optimal Monetary Policy

$$\max_{b_{t+1}, \ell_t, c_t^f, c_t^h} \sum_{t=0}^{\infty} \beta^t \left[u(c_t^h, c_t^f) - v(\ell_t) \right], \quad \Upsilon = 0, \tau_t = \tau, \beta R^* = 1,$$

$$\text{s.t.} \quad c_t^h + p c_t^f + \frac{b_{t+1}}{R^*} = b_t + \ell_t$$

$$\frac{1 - \omega}{\omega} \left(\frac{c_t^h}{c_t^f} \right)^{\frac{1}{\gamma}} = p(1 + \tau)$$

$$u_h(c_t^h, c_t^f) = \beta R^* u_h(c_{t+1}^h, c_{t+1}^f)$$

Ramsey Optimal Monetary Policy

$$\max_{\ell_t, c_t^f, c_t^h} \sum_{t=0}^{\infty} \beta^t \left[u(c^h, c^f) - v(\ell) \right], \quad \Upsilon = 0, \tau_t = \tau, \beta R^* = 1,$$

$$\text{s.t.} \quad c_t^h + p c_t^f + \frac{b_{t+1}}{R^*} = b_t + \ell_t$$

$$\frac{1 - \omega}{\omega} \left(\frac{c^h}{c^f} \right)^{\frac{1}{\gamma}} = p (1 + \tau)$$

Ramsey Optimal Monetary Policy

$$\max_{\ell, c^f, c^h} \sum_{t=0}^{\infty} \beta^t \left[u(c^h, c^f) - v(\ell) \right], \quad \Upsilon = 0, \tau_t = \tau, \beta R^* = 1, b_0 = 0$$

$$\text{s.t.} \quad c^h + p c^f = \ell$$

$$\frac{1 - \omega}{\omega} \left(\frac{c^h}{c^f} \right)^{\frac{1}{\gamma}} = p (1 + \tau)$$

Ramsey Optimal Monetary Policy

$$\max_{\ell, c^f, c^h} u(c^h, c^f) - v(\ell),$$

$$\Upsilon = 0, \tau_t = \tau, \beta R^* = 1, b_0 = 0$$

$$\text{s.t. } c^h + p c^f = \ell,$$

$$\frac{1 - \omega}{\omega} \left(\frac{c^h}{c^f} \right)^{\frac{1}{\gamma}} = p (1 + \tau)$$

Ramsey problem reduced to planner choosing ℓ directly, while households choose c^h, c^f

Ramsey Optimal Monetary Policy

$$\max_{\ell, c^f, c^h} u(c^h, c^f) - v(\ell),$$

$$\Upsilon = 0, \tau_t = \tau, \beta R^* = 1, b_0 = 0$$

$$\text{s.t. } c^h + p c^f = \ell,$$

$$\frac{1 - \omega}{\omega} \left(\frac{c^h}{c^f} \right)^{\frac{1}{\gamma}} = p(1 + \tau)$$

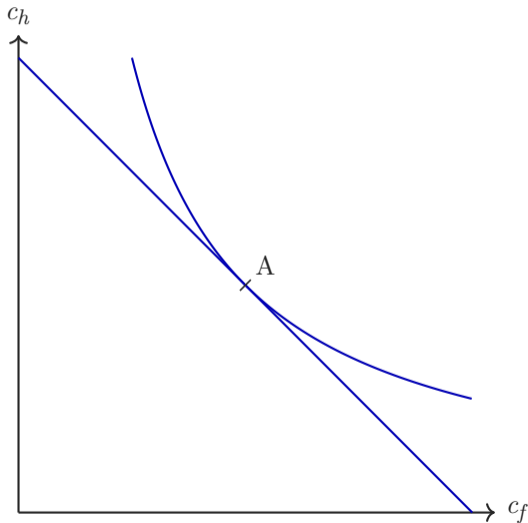
Optimal policy:

$$\ell_t^{opt}(\tau) = \left(\frac{1 + \tau}{1 + \Theta_\tau^{-1} \tau} \right)^{\frac{\sigma}{1 + \sigma \psi}} \left[\frac{\Theta_\tau + \tau}{1 + \tau} (\omega \Theta_\tau)^{\frac{\sigma - \gamma}{\gamma - 1}} \right]^{\frac{1}{1 + \sigma \psi}} > \ell_t^{look}(\tau).$$

Why is Stimulus Optimal?

$$\max_{c^h, c^f} u(c^h, c^f) - v(\ell)$$

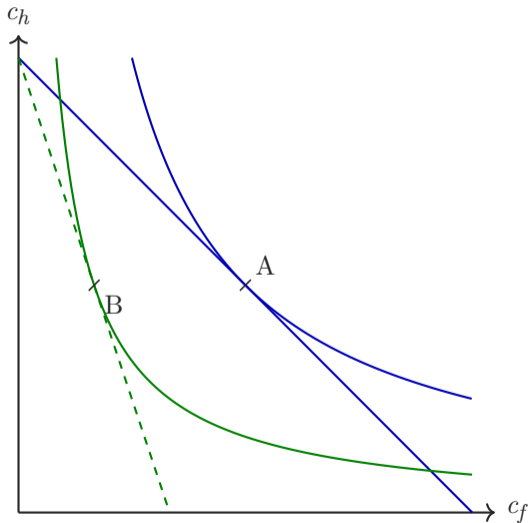
$$\text{s.t. } c^h + p(1+\tau)c^f = w\ell + d + T$$



Why is Stimulus Optimal?

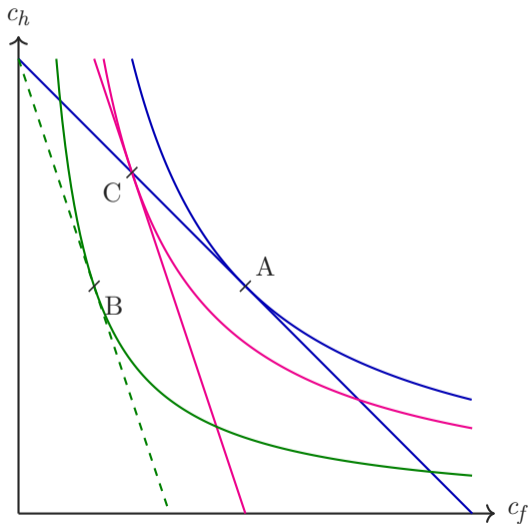
$$\max_{c^h, c^f} u(c^h, c^f) - v(\ell)$$

$$\text{s.t. } c^h + p(1+\tau)c^f = w\ell + d + T$$



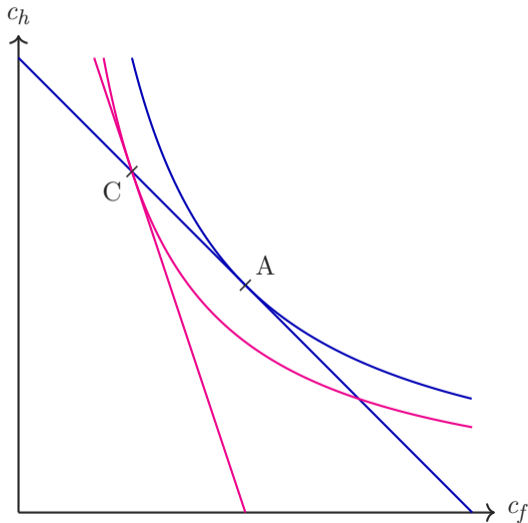
Why is Stimulus Optimal?

$$\begin{aligned} & \max_{c^h, c^f} u(c^h, c^f) - v(\ell) \\ \text{s.t. } & c^h + p(1+\tau)c^f = w\ell + d + T \end{aligned}$$



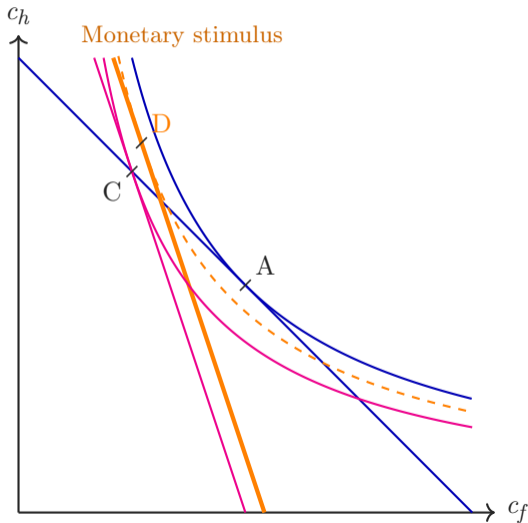
Why is Stimulus Optimal?

$$\begin{aligned} & \max_{c^h, c^f} u(c^h, c^f) - v(\ell) \\ \text{s.t. } & c^h + p(1+\tau)c^f = w\ell + d + T \end{aligned}$$



Why is Stimulus Optimal?

$$\begin{aligned} & \max_{c^h, c^f} u(c^h, c^f) - v(\ell) \\ \text{s.t. } & c^h + p(1+\tau)c^f = w\ell + d + T(C^f) \end{aligned}$$



Employment under Optimal Policy

$$\frac{d \log \ell^{opt}}{d\tau} = \frac{(\Theta_\tau - 1)}{(1 + \sigma\psi)(1 + \tau)(\Theta_\tau + \tau)\Theta_\tau} (1 - \sigma)\gamma\tau$$

Employment under Optimal Policy

$$\frac{d \log \ell^{opt}}{d\tau} = \frac{(\Theta_\tau - 1)}{(1 + \sigma\psi)(1 + \tau)(\Theta_\tau + \tau)\Theta_\tau} (1 - \sigma)\gamma\tau$$

- Employment response depends entirely on the IES
 - ▶ $\uparrow \ell \iff \sigma < 1$
- Distortion in consumption bundle reduces the marginal return to labor, leading to substitution and income effects

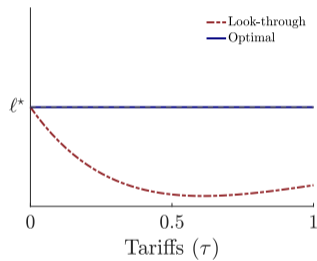
Employment under Optimal Policy

$$\frac{d \log \ell^{opt}}{d\tau} = \frac{(\Theta_\tau - 1)}{(1 + \sigma\psi)(1 + \tau)(\Theta_\tau + \tau)\Theta_\tau} (1 - \sigma)\gamma\tau$$

- Employment response depends entirely on the IES
 - ▶ $\uparrow \ell \iff \sigma < 1$
- Distortion in consumption bundle reduces the marginal return to labor, leading to substitution and income effects

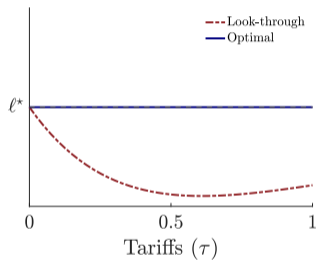
Employment Response: Optimal Policy vs. Look-through

(b) $\sigma = 1$

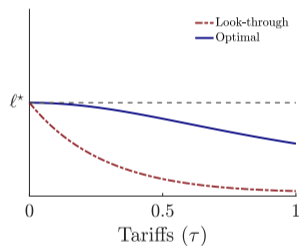


Employment Response: Optimal Policy vs. Look-through

(b) $\sigma = 1$

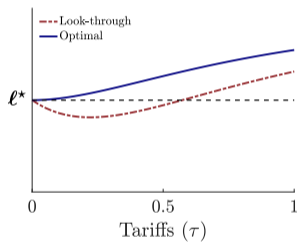


(c) $\sigma = 2$

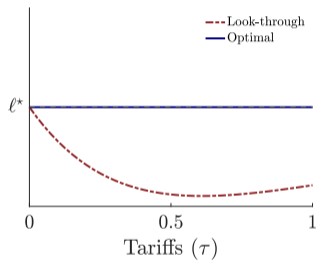


Employment Response: Optimal Policy vs. Look-through

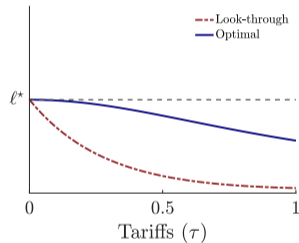
(a) $\sigma = 0.5$



(b) $\sigma = 1$

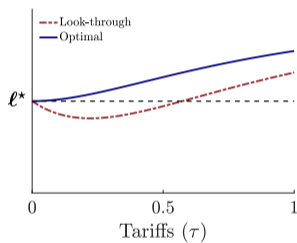


(c) $\sigma = 2$

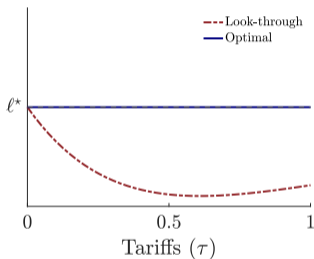


Employment Response: Optimal Policy vs. Look-through

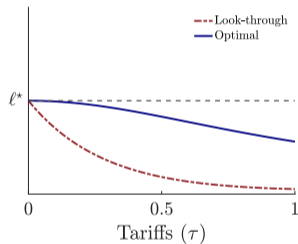
(a) $\sigma = 0.5$



(b) $\sigma = 1$



(c) $\sigma = 2$



Under optimal policy, output is always above natural level.

- If $\sigma < 1$, output exceeds efficient level as well

Calibration

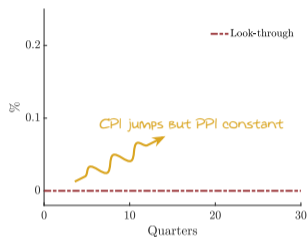
Price adj. costs not rebated: $\Upsilon = 1$

Parameter	Description	Value
β	Discount factor	0.99
γ	Elasticity between h and f	4
σ	Intertemporal elasticity	0.5
ψ	Inverse Frisch elasticity	1
ε	Elasticity of substitution (varieties)	6

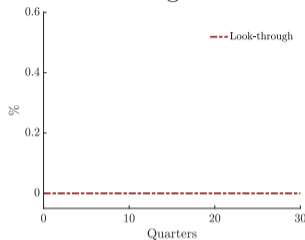
- Calibrate φ, ω to match: (i) slope of Phillips Curve = 0.0055 (Hazell et al.); (ii) imports to tradable GDP
- Non-linear impulse response to permanent tariff $\tau_t = 0.15$ (baseline)

Permanent Tariff: Look-through

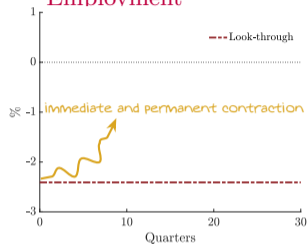
Home-goods inflation



Exchange rate



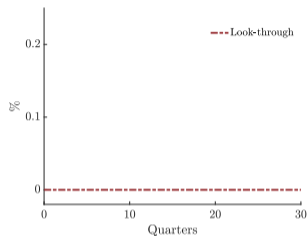
Employment



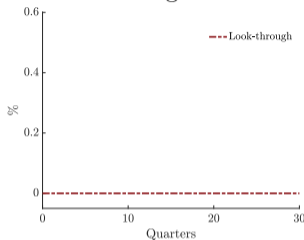
Inflation is annualized. Consumption, employment and the exchange rate are expressed in percentage deviation from the pre-tariff allocation. Trade balance are expressed as a fraction of GDP.

Permanent Tariff: Look-through vs. Optimal Policy

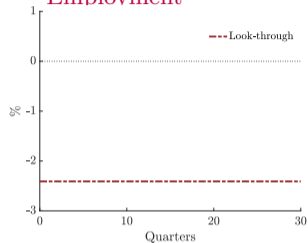
Home-goods inflation



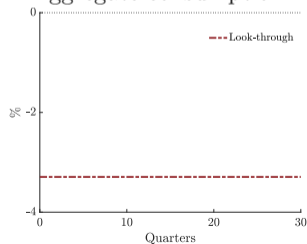
Exchange rate



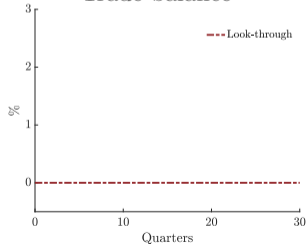
Employment



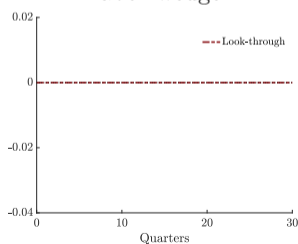
Aggregate consumption



Trade balance



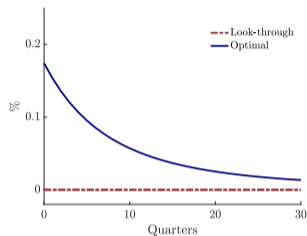
Labor wedge



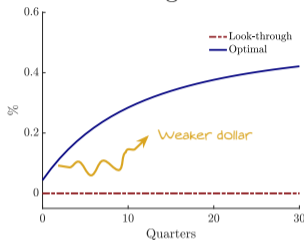
Inflation is annualized. Consumption, employment and the exchange rate are expressed in percentage deviation from the pre-tariff allocation. Trade balance are expressed as a fraction of GDP.

Permanent Tariff: Look-through vs. Optimal Policy

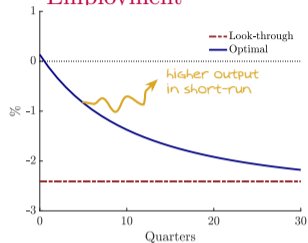
Home-goods inflation



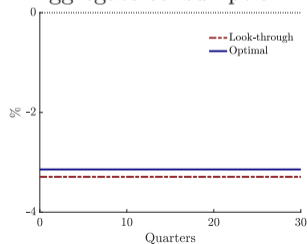
Exchange rate



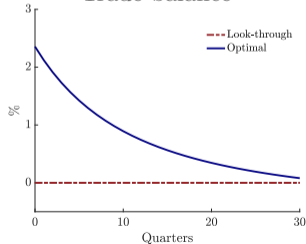
Employment



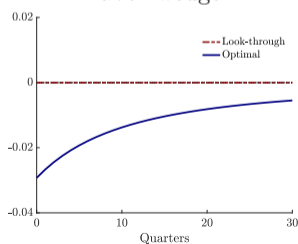
Aggregate consumption



Trade balance



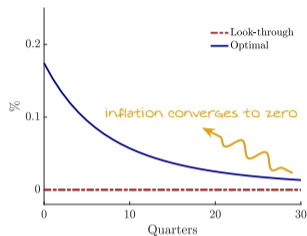
Labor wedge



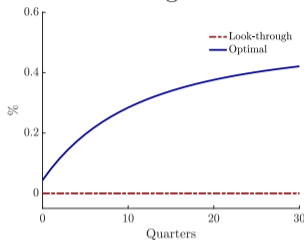
Inflation is annualized. Consumption, employment and the exchange rate are expressed in percentage deviation from the pre-tariff allocation. Trade balance are expressed as a fraction of GDP.

Permanent Tariff: Look-through vs. Optimal Policy

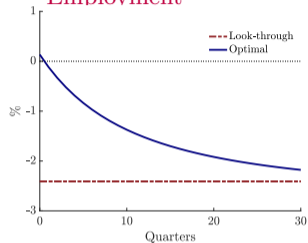
Home-goods inflation



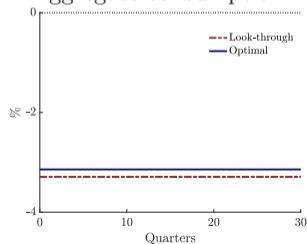
Exchange rate



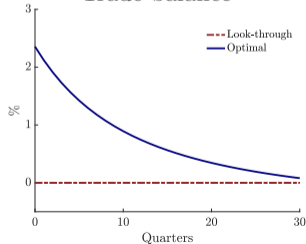
Employment



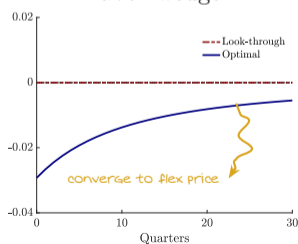
Aggregate consumption



Trade balance



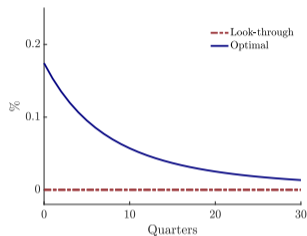
Labor wedge



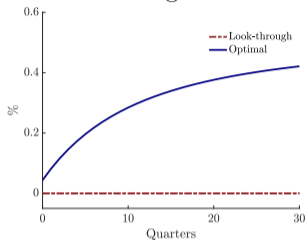
Inflation is annualized. Consumption, employment and the exchange rate are expressed in percentage deviation from the pre-tariff allocation. Trade balance are expressed as a fraction of GDP.

Permanent Tariff: Look-through vs. Optimal Policy

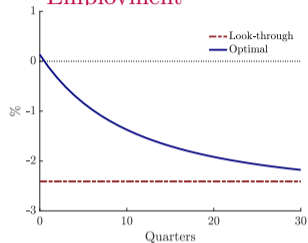
Home-goods inflation



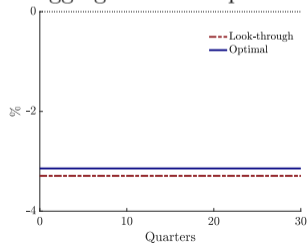
Exchange rate



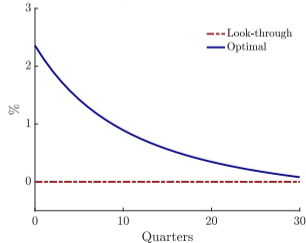
Employment



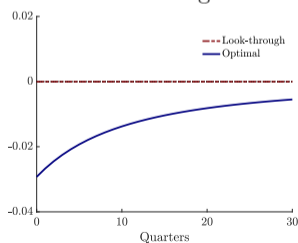
Aggregate consumption



Trade balance



Labor wedge




Inflation is annualized. Consumption, employment and the exchange rate are expressed in percentage deviation from the pre-tariff allocation. Trade balance are expressed as a fraction of GDP.

Additional Results in the Paper

- Permanent shocks vs transitory ▶ Details
- Anticipated shocks: ▶ Details
 - ▶ Respond today, but less strongly
 - ▶ Trade deficit on impact
- PPI vs. CPI Targeting ▶ Details
 - ▶ Much larger losses under CPI targeting
- Main extensions
 - i) Endogenous terms-of-trade
 - ii) Imported intermediate inputs
 - iii) Distorted steady state
- Welfare

Additional Results in the Paper

- Permanent shocks vs transitory ▶ Details
- Anticipated shocks: ▶ Details
 - ▶ Respond today, but less strongly
 - ▶ Trade deficit on impact
- PPI vs. CPI Targeting ▶ Details
 - ▶ Much larger losses under CPI targeting
- Main extensions  Next
 - i) Endogenous terms-of-trade
 - ii) Imported intermediate inputs
 - iii) Distorted steady state
- Welfare

Endogenous TOT

- Continuum of SOE where c^f is a CES composite of goods produced abroad

$$c_{it} = \left[\omega (c_{it}^h)^{1-\frac{1}{\gamma}} + (1-\omega) (c_{it}^f)^{1-\frac{1}{\gamma}} \right]^{\frac{\gamma}{\gamma-1}}, \quad c_{it}^f = \left(\int_0^1 (c_{it}^k)^{1-\frac{1}{\theta}} dk \right)^{\frac{\theta}{\theta-1}}$$

- Export demand for home good

$$p_t = A(y_t - c_t^h)^{\frac{1}{\theta}} \quad \text{Baseline } \theta = \infty$$

- Optimal tariff is positive $\tau^* = \frac{1}{\theta-1}$ with $\theta > 1$

▶ Output above natural level $\iff \tau > \tau^*$.


– Same as baseline: any increase in tariff leads to policy easing

▶ Quantitatively, modest attenuation of stimulus ▶ Results

Tariffs on Imported Inputs

- Production of domestic varieties $y_{jt} = \ell_{jt}^{1-\nu} x_{jt}^\nu$
- NK Phillips curve:

$$(1 + \pi_t)\pi_t = \frac{\varepsilon}{\varphi} [mc_t - 1] + \beta \frac{u_h(c_{t+1}^h, c_{t+1}^f)}{u_h(c_t^h, c_t^f)} \frac{y_{t+1}}{y_t} (1 + \pi_{t+1})\pi_{t+1},$$

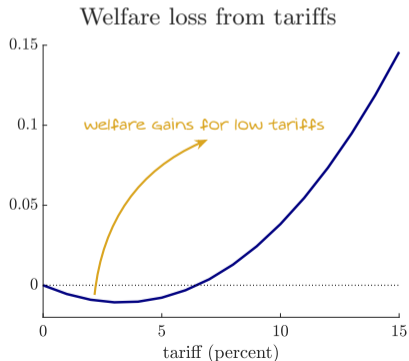

$$mc_t = \left[\frac{W_t}{(1-\nu)P_t^h} \right]^{1-\nu} \left[\frac{p(1+\tau_t^x)}{\nu} \right]^\nu$$

- Same as baseline: firms perceive cost of imported inputs to be larger than social one
⇒ Optimal policy is stimulative

Quantitatively, larger welfare gains and increase in employment

The case with distorted steady state

- Start now from $s = 0$ and use tariff revenue to subsidize labor $P_t^f \tau_t c_t^f = s_t W_t \ell_t$
 - ▶ Unambiguous increase in employment
 - ▶ Inflation is mitigated despite larger increases in output



Conclusions

- Optimal monetary policy response to tariffs is to overheat economy
 - ▶ Monetary stimulus to offset fiscal externality
 - ▶ Let inflation rise above and beyond the direct effects from tariffs

Conclusions

- Optimal monetary policy response to tariffs is to overheat economy
 - ▶ Monetary stimulus to offset fiscal externality
 - ▶ Let inflation rise above and beyond the direct effects from tariffs
- Trade surplus in response to permanent tariffs
- Dollar depreciation since April 2 is not puzzling

Extra Slides

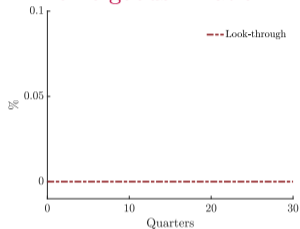
Welfare

	Gains Optimal Policy	Losses from Tariffs	
		Optimal Policy	Look-through
Baseline	0.009	0.99	1.00
Anticipated tariffs	0.008	0.96	0.97
Temporary tariffs	0.001	0.19	0.19
Endogenous TOT	0.007	0.68	0.69
<hr/>			
Model w/ imported inputs			
Tariffs on c and x	0.32	1.61	1.91
Tariffs on c	0.01	1.00	1.01
Tariffs on x	0.22	0.59	0.80

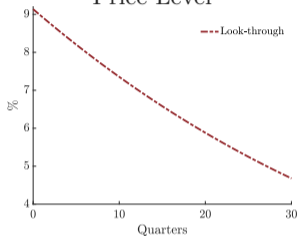
Note: Welfare corresponds to permanent consumption equivalence (%).

Temporary Tariff $\tau_t = 0.97 \cdot \tau_{t-1}$ ▶ back

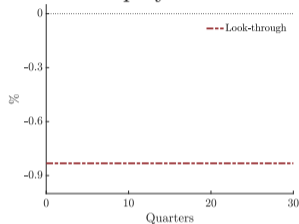
Home-goods inflation



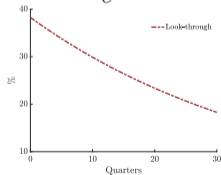
Price Level



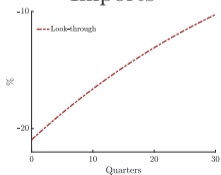
Employment



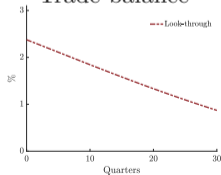
c^h



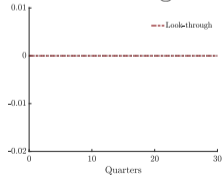
Imports



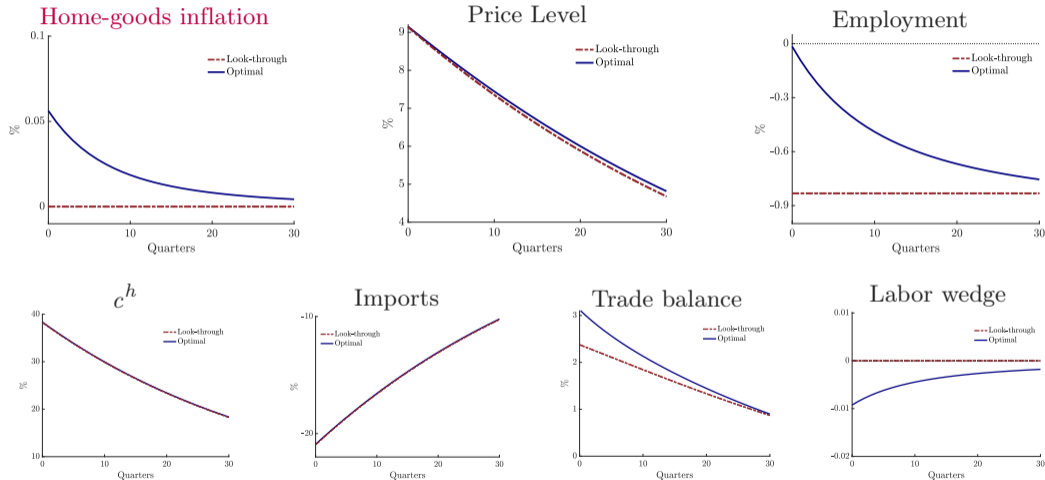
Trade balance



Labor wedge



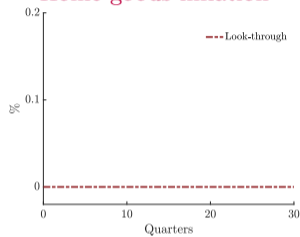
Temporary Tariff $\tau_t = 0.97 \cdot \tau_{t-1}$ [▶ back](#)



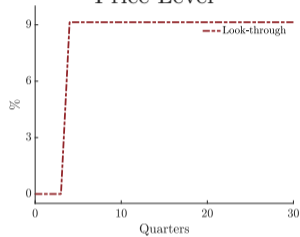
As in the case of a permanent tariff, optimal MP stimulates the economy

Anticipation Effects [▶ back](#)

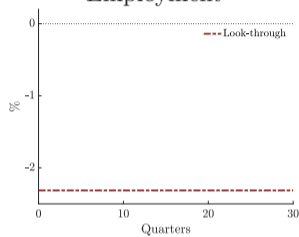
Home-goods inflation



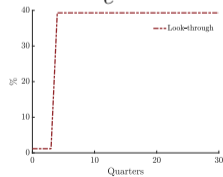
Price Level



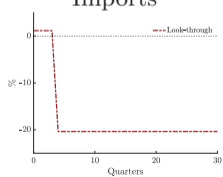
Employment



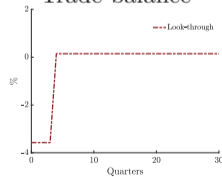
c^h



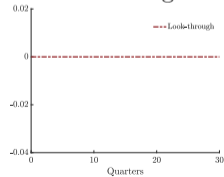
Imports



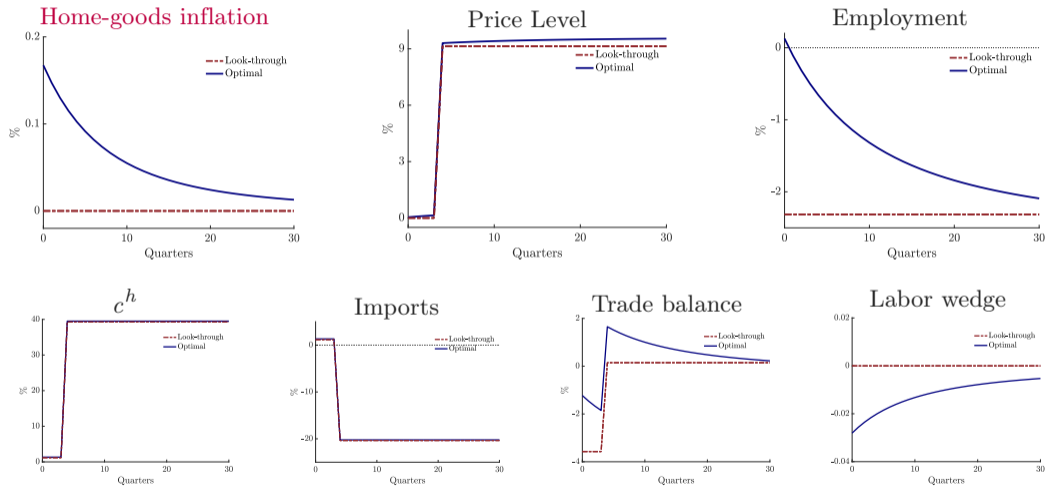
Trade balance



Labor wedge



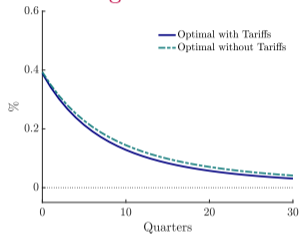
Anticipation Effects [▶ back](#)



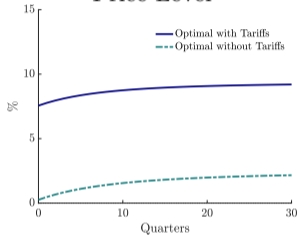
MP less expansionary: imports inefficiently high before tariff takes place

The Case with Distorted Steady State ▶ back

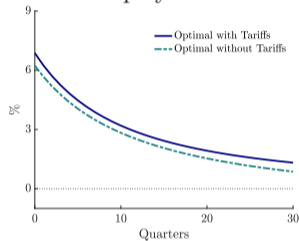
Home-goods inflation



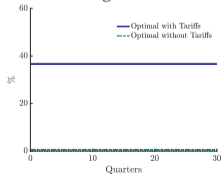
Price Level



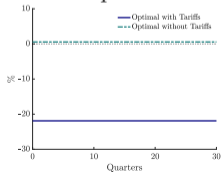
Employment



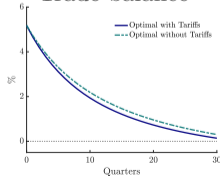
c^h



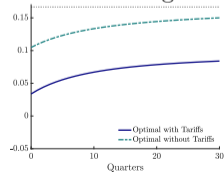
Imports



Trade balance



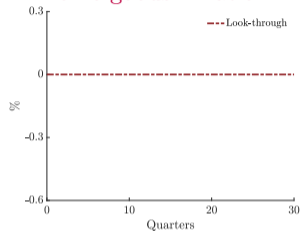
Labor wedge



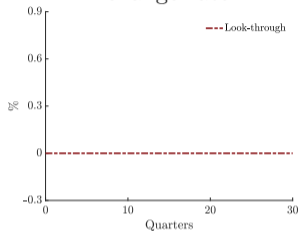
CPI Targeting Rule

Permanent Tariff [» Back](#)

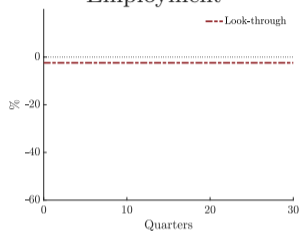
Home-goods inflation



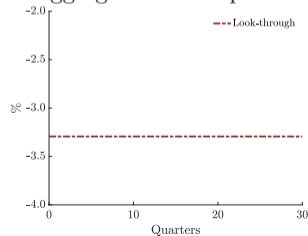
Exchange rate



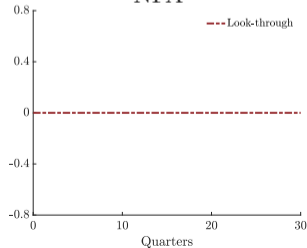
Employment



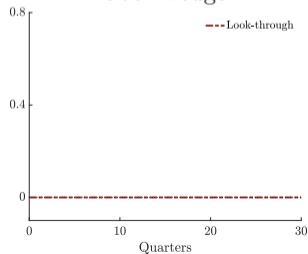
Aggregate consumption



NFA

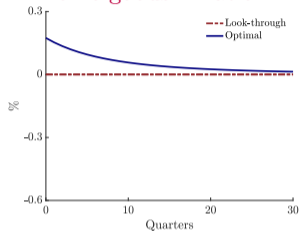


Labor wedge

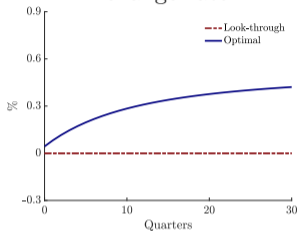


Permanent Tariff [» Back](#)

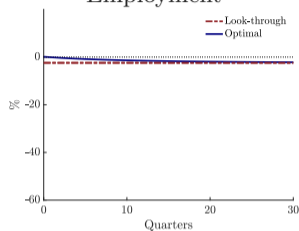
Home-goods inflation



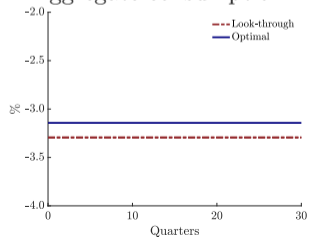
Exchange rate



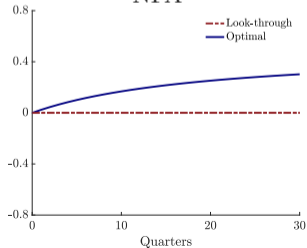
Employment



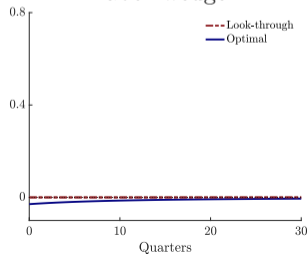
Aggregate consumption



NFA

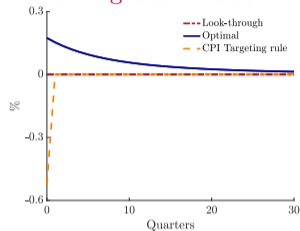


Labor wedge

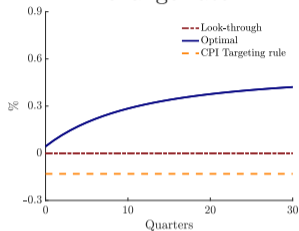


Permanent Tariff [» Back](#)

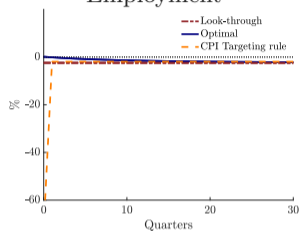
Home-goods inflation



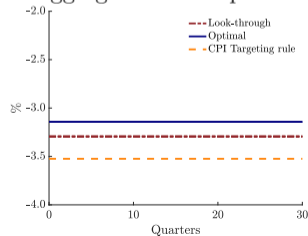
Exchange rate



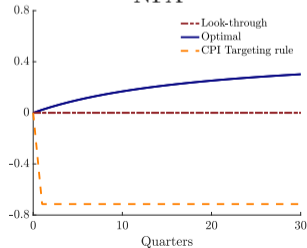
Employment



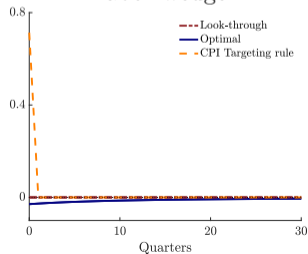
Aggregate consumption



NFA

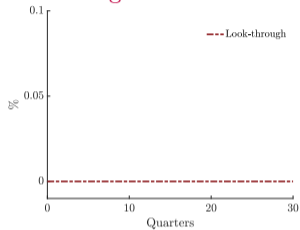


Labor wedge

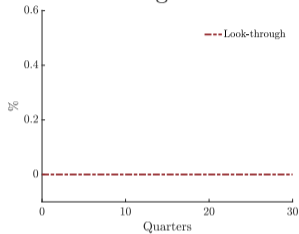


Temporary Tariff $\tau_t = 0.97 \cdot \tau_{t-1}$ [▶ back](#)

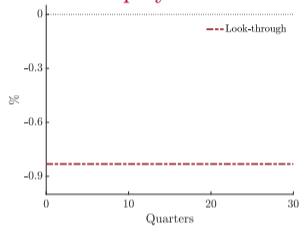
Home-goods inflation



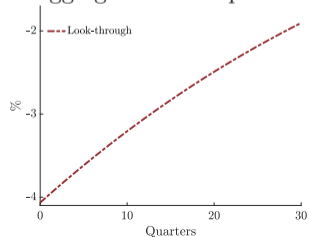
Exchange rate



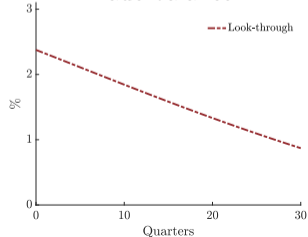
Employment



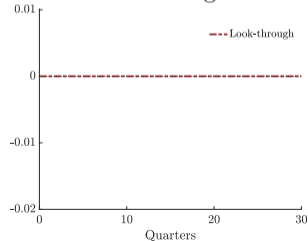
Aggregate consumption



Trade balance

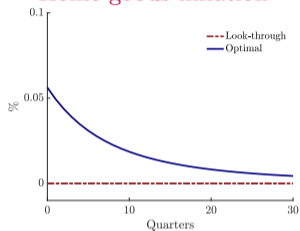


Labor wedge

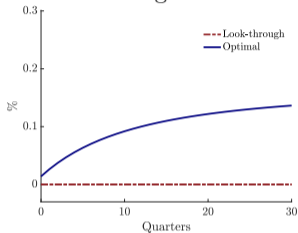


Temporary Tariff $\tau_t = 0.97 \cdot \tau_{t-1}$ ▶ back

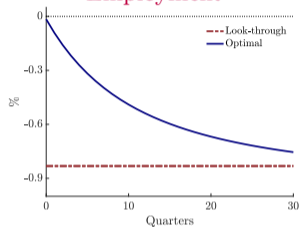
Home-goods inflation



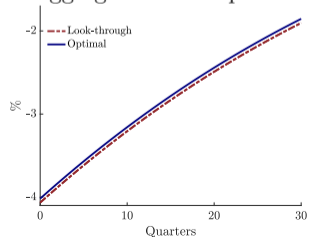
Exchange rate



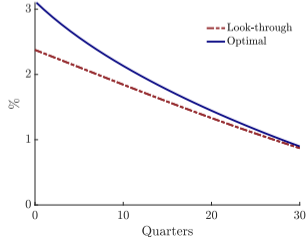
Employment



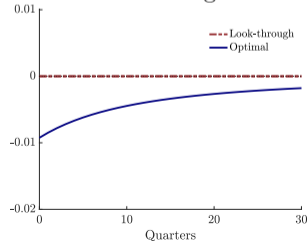
Aggregate consumption



Trade balance



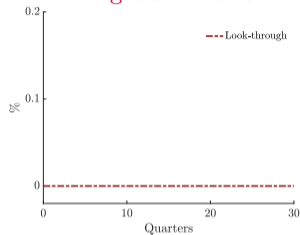
Labor wedge



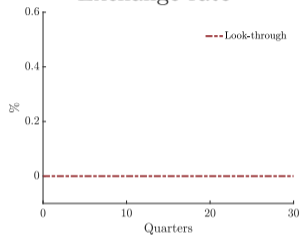
As in the case of a permanent tariff, optimal MD stimulates the economy

Anticipation Effects [▶ back](#)

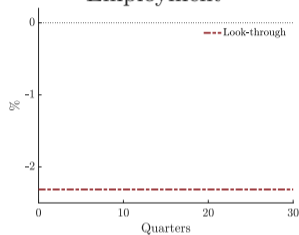
Home-goods inflation



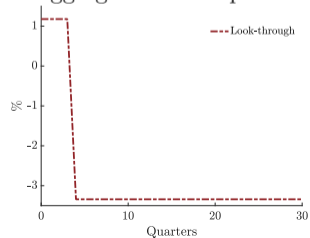
Exchange rate



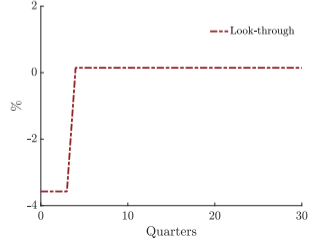
Employment



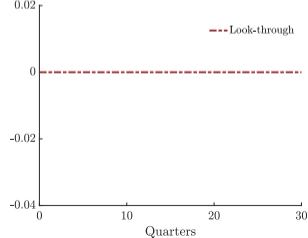
Aggregate consumption



Trade balance

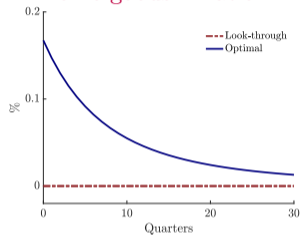


Labor wedge

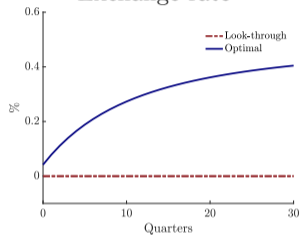


Anticipation Effects [▶ back](#)

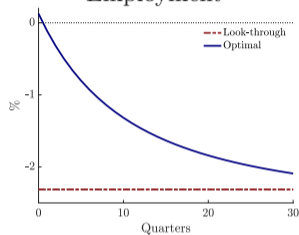
Home-goods inflation



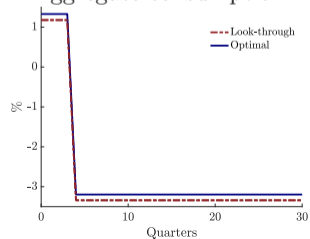
Exchange rate



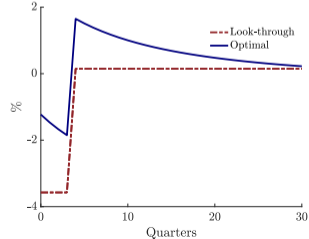
Employment



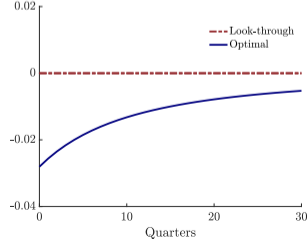
Aggregate consumption



Trade balance

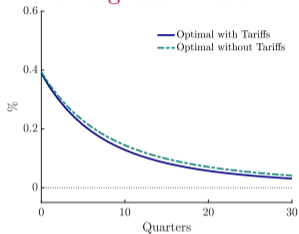


Labor wedge

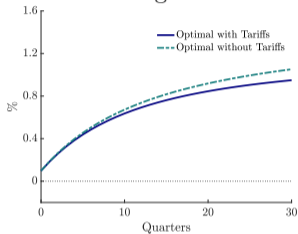


The Case with Distorted Steady State [▸ back](#)

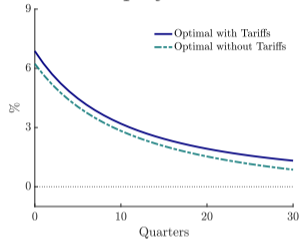
Home-goods inflation



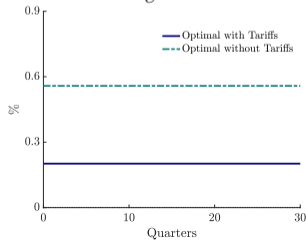
Exchange rate



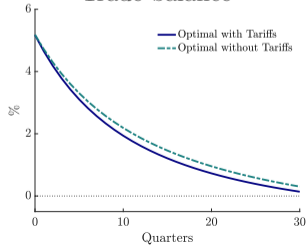
Employment



c^h



Trade balance



Labor wedge

